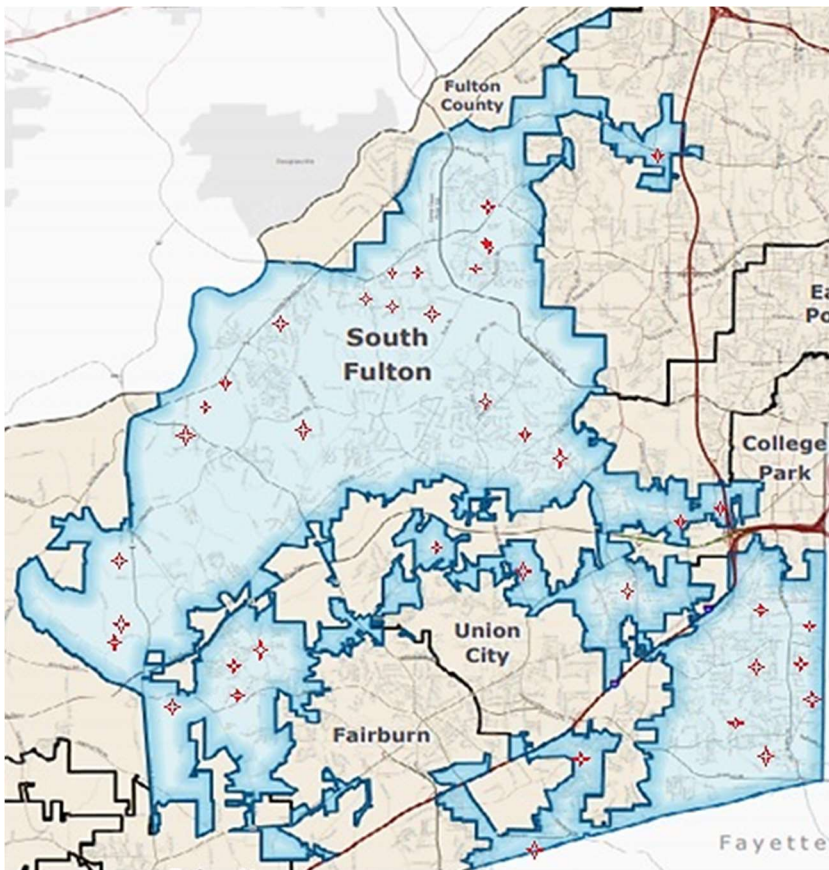


# COMMUNITY RESOURCE MAPPING PROJECT

Community Resource Mapping is used to develop knowledge of the existing assets, stakeholders, and connections in communities. It is generally used to link community resources with an agreed upon vision, organizational goals, strategies, or expected outcomes.

Please help us identify South Fulton's community resources by completing a short survey at <https://www.surveymonkey.com/r/GXSQPXN>.



**Do you own a  
non-profit?**

---

**Do you belong to  
a community  
association?**

---

**The City of  
South Fulton  
needs your  
information!**

## **CONTACT INFO:**

Kathleen Vaughn,  
Grants Administrator  
[Kathleen.Vaughn@City  
ofSouthFultonGa.Gov](mailto:Kathleen.Vaughn@CityofSouthFultonGa.Gov)